

**FFBI**

Creative Imaging  
Technology



 **RealPro**  
3D-Packager

...the definitive 3D visualisation software  
for fast carton packaging prototyping

# Power to persuade

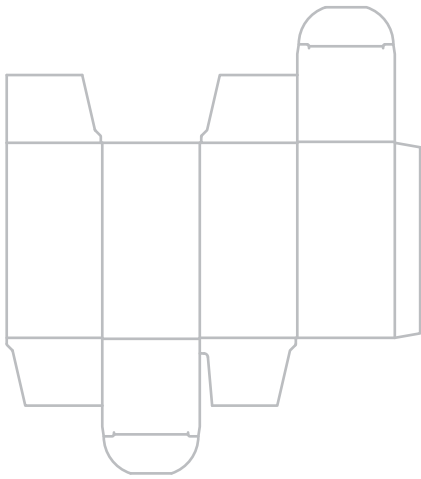
Today's pace of change offers opportunities to shine and to fade in equal measure. In the blink of an eye, the latest packaging becomes old news and consumer expectations have moved on again. The challenge is to capture each influential moment or spark of creativity and realise its potential in the shortest timeframe.

In the world of packaging production, success is under threat at every stage of the process through the combined hazards of time delay, spiralling costs and production complexity. The conventional practice of proofing packaging designs through printing samples has numerous limitations that can be instantly prohibitive. Creation costs and turnaround times, the difficulties of shipping samples for review or testing, and then of collating feedback from multiple stakeholders are just some of the challenges that threaten to undermine the project before it is even off the ground.

FFEI's RealPro 3D-Packager is a solution that has been designed to minimise those hazards by providing the power to design, develop, test and validate through 3D visualisation on your PC or Mac.

## FFEI RealPro 3D-Packager supports your packaging development process





## Design without restrictions

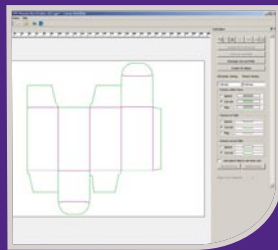
Seamlessly interfacing with Adobe Illustrator, RealPro 3D-Packager is the easiest, most affordable complete 3D visualisation tool for fast carton design and prototyping. It dramatically reduces the costs associated with design sampling, accelerating the creation and delivery of 3D 'soft' mock-ups for:

- Designers, Agencies & Marketing Services Providers
- Brand Owners
- Packaging Converters

Why design in 2D when you can easily design in real-time with instant 3D views? The FFEI RealPro 3D-Packager allows you to design, distribute and demonstrate, investigate and create:

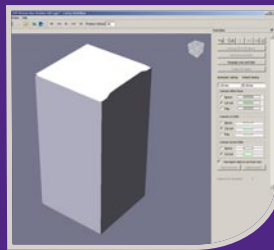
- Instantly share your 3D 'soft' mock-up with customers anywhere in the world via the internet or email
- Explore the visual impact of varnishes, foil stamping and a range of sophisticated product enhancement techniques without extra expense
- Display your finished 3D design with a 360° interactive view, animate the folding process and annotate your comments
- Add updates and trial suggestions via a few mouse clicks and enjoy instant feedback
- Lower your carbon footprint by transporting fewer printed samples

## 4 Steps from 2D to 3D



### Step 1

In RealPro 3D-Packager — File> Import 2D select your file and press the 'Find cuts and folds' button



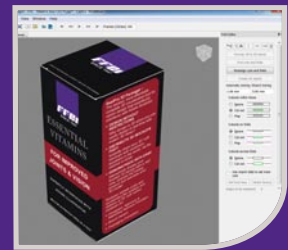
### Step 2

Press the 'Create 3D object' button and then press 'Play'



### Step 3

Press the Adobe Illustrator icon. Next, in Adobe Illustrator, place your artwork and then, in the RealPro 3D-Packager window, press the 'Update Packager Now' button



### Step 4

You now have a 3D prototype, ready to send to your client! (Or, you can add special effects)

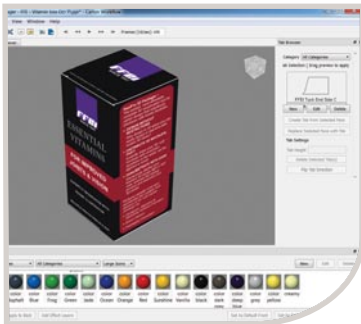
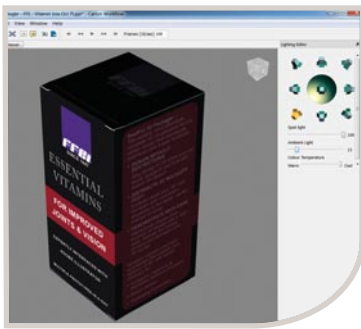
## What our customers say...

"Chesapeake's global design centres now have the ability to produce fast 3D mock-ups, utilising FFEI's RealPro 3D-Packager. This can prevent costly traditional mock-ups eating into lead-times. The power of sending a 3D visual across the globe within hours of a marketing meeting is priceless."

**Gill Wright - Artwork & Constructional Design Manager, UK & Ireland**  
CHESAPEAKE PHARMACEUTICAL AND HEALTHCARE PACKAGING

"FFEI's RealPro 3D-Packager has enabled us to react to design briefs faster, so that we can present concepts to our global customers instantly and professionally. By removing the need to always produce a physical mock-up, our costs are reduced at the same time. Our customers now benefit from an improved service and, at the same time, we save money!"

**Stephen Shortland - Managing Director**  
NEW VISION PACKAGING



## Features

- 360° interactive view of 3D designs
- Allows remote client view, including an integrated annotation tool for collaborative client mark-up and approval
- Seamlessly integrates with Adobe Illustrator via bi-directional file updates
- Automatically identifies cut lines and folds
- Automatic or manual fixing and editing of die lines
- Animates the folding order and process
- Includes a wide range of standard substrates which can be customised
- Supports multi-component carton board projects in the same file, e.g. carton box with a divider
- Provides packaging weight data
- Mac or Windows platform

## Effects & Finishes

- Paper and carton, coated, uncoated, matt, gloss, foil, textured, film
- Pantone, spot colours, RGB, CMYK and opaque colours
- Special effects including spot varnishes, embossing, debossing, die-cutting, reverse print, cut-outs and perforations

## Export Formats

- Proprietary PVU (RealPro 3D-Packager file format), 3D PDF, JPEG/PNG Hi res images, JPEG/PNG Image sequence and VRML

## Import Formats

- IGES, VRML, DXF, PDF and Adobe Illustrator CS3, CS4, CS5 plus any Adobe Illustrator compatible file formats such as EPS, PDF, TIFF etc.

## FFEI Limited

FFEI is a renowned, award-winning research and development company, with a strong track record spanning more than 60 years' of continual innovation. Working both autonomously and alongside blue-chip integration partners, FFEI imaging solutions range from hardware and software for the graphic arts market to Life Science scanners for the medical science market. The company successfully develops, manufactures and delivers third-party products for distribution through brands such as Agfa, Enfocuss, FUJIFILM, Leica and Nilpeter.

RealPro 3D-Packager belongs to a highly desirable portfolio of FFEI graphic arts software solutions, backed by a robust infrastructure of highly qualified development, manufacturing, logistics and technical specialists. This vast network provides seamless support to end-users, resellers and OEM partners worldwide.

FFEI is always interested in new partnerships with resellers. To find out more, please email [Enquires@ffe.co.uk](mailto:Enquires@ffe.co.uk) or telephone +44 (0) 1442 213440

To find out more about FFEI RealPro 3D-Packager, go to [www.ffe.co.uk/realpro3dpackager](http://www.ffe.co.uk/realpro3dpackager) or, to find your local representative, please see below.

DEALER STAMP



## FFEI Ltd

Graphics House, Boundary Way, Hemel Hempstead, Herts, HP2 7SU, UK  
Tel: +44 (0)1442 213440 Web: [www.ffe.co.uk](http://www.ffe.co.uk)

Copyright FFEI Ltd. All rights reserved  
Published by FFEI Ltd., Part No. 7A15190